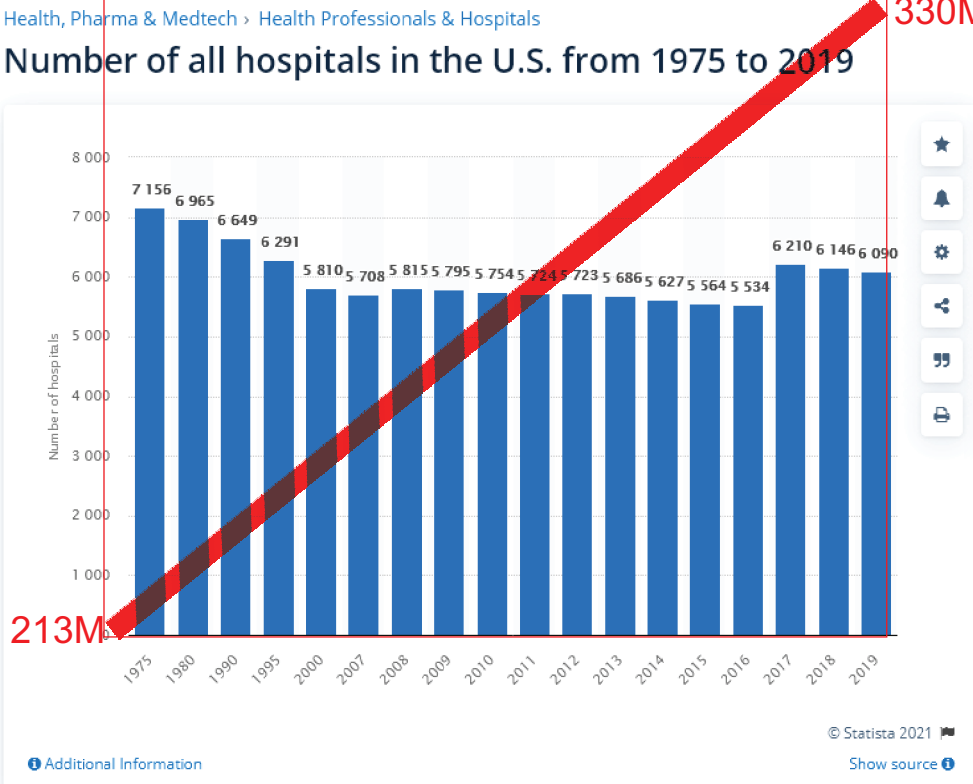


US Hospitals Have Been Incrementally Downsized Since the 1970’s. Oregon & Washington have had the lowest hospital beds per capita @ 1.7/1000 in the US since 2013. CA second lowest at 1.9/1000. The current claims of overwhelmed hospitals as of Sept. 1, 2021 across the US are the result of over 40 years of tax cuts leading to service cuts and leaner & meaner profit oriented hospital staffing and capacity design. It has CREATED the current hospital capacity crisis.

(Data sources taken late August 2021: Oregon Health Authority; American Hospital Association; Kaiser Hospital)

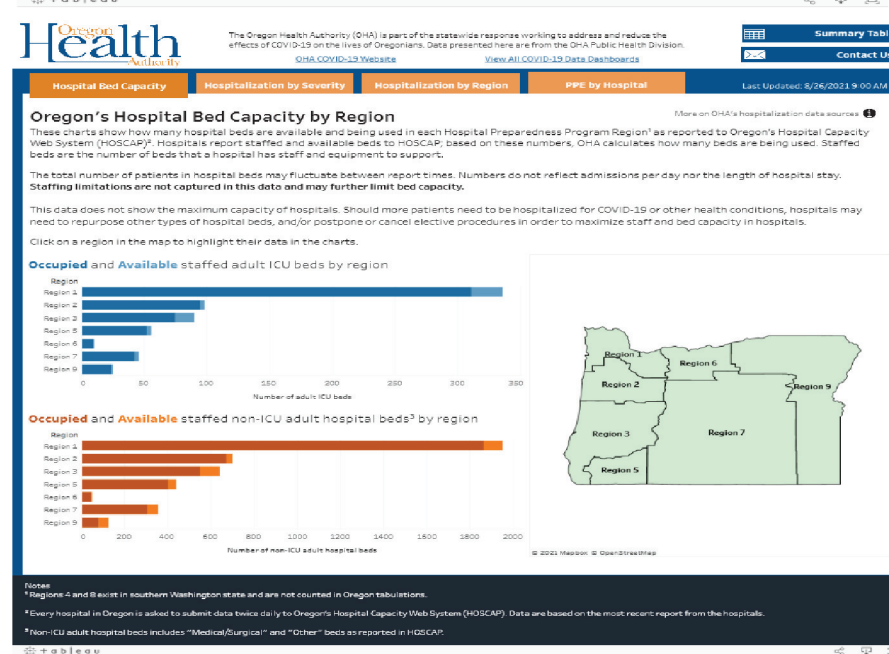
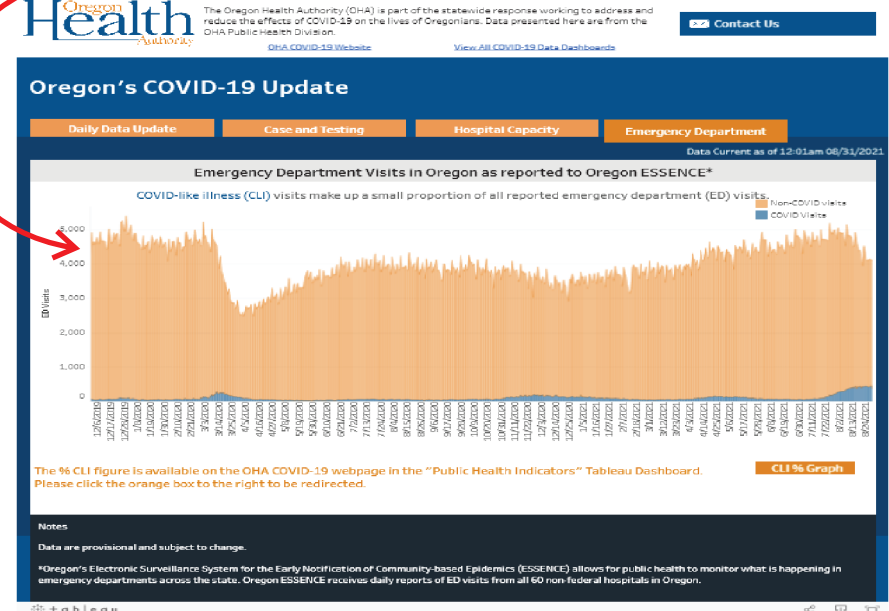
>50% Population Increase While 15% Fewer Hospitals



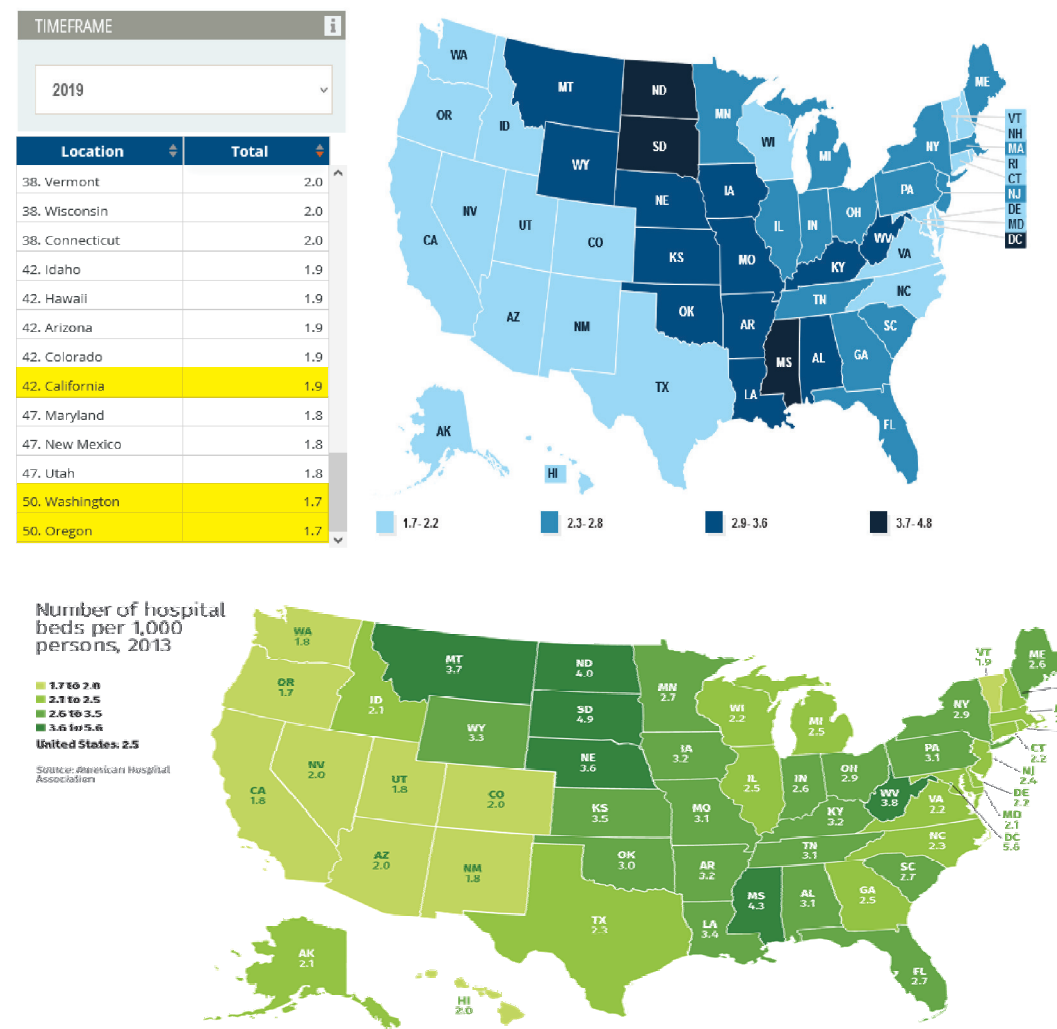
Staffed Beds



Capacity crisis is apparent in Dec 2019 before covid.



Beds Per 1000 US 2019 - Kaiser Data



Beds Per 1000 US 1980 - 2014 - AHA

Table 90. Community hospital beds and average annual percent change, by state: United States, selected years 1980-2014

[Data are based on reporting by a census of hospitals]

State	1980	1990	2000	2010	2013	2014	1980-1990	1990-2000	2000-2010	2010-2014
Beds per 1,000 resident population										
United States	4.5	3.7	2.9	2.6	2.5	2.5	-1.9	-2.4	-1.1	-1.0
Alabama	5.1	4.6	3.7	3.2	3.1	3.1	-1.0	-2.2	-1.4	-0.8
Alaska	2.7	2.3	2.3	2.2	2.1	2.2	-1.6	-	-0.4	-
Arizona	3.6	2.7	2.1	2.0	2.0	2.0	-2.8	-2.5	-0.5	-
Arkansas	5.0	4.6	3.7	3.2	3.2	3.1	-0.8	-2.2	-1.4	-0.8
California	3.6	2.7	2.1	2.0	2.0	2.0	-2.8	-2.5	-1.0	-1.3
Colorado	4.2	3.2	2.2	2.0	2.0	2.0	-2.7	-2.7	-0.9	-
Connecticut	3.5	2.9	2.3	2.3	2.2	2.2	-1.9	-2.3	-	-1.1
Delaware	3.6	3.0	2.3	2.4	2.2	2.2	-1.8	-2.6	0.4	-2.2
District of Columbia	7.3	7.6	5.8	5.7	5.6	5.4	0.4	-2.7	-0.2	-1.3
Florida	5.1	3.9	3.2	2.9	2.7	2.7	-2.6	-2.0	-1.0	-1.8
Georgia	4.6	4.0	2.9	2.6	2.5	2.4	-1.4	-3.2	-1.1	-2.0
Hawaii	3.1	2.7	2.5	2.4	2.0	2.0	-1.4	-0.8	-0.4	-4.5
Idaho	3.7	3.2	2.7	2.2	2.1	2.0	-1.4	-1.7	-2.0	-2.4
Illinois	5.1	4.0	3.0	2.6	2.5	2.5	-2.4	-2.8	-1.4	-1.0
Indiana	4.5	3.9	3.2	2.8	2.6	2.6	-1.4	-2.0	-1.3	-1.8
Iowa	5.7	5.1	4.0	3.3	3.2	3.1	-1.1	-2.4	-1.9	-1.6
Kansas	5.8	4.8	4.0	3.5	3.5	3.5	-1.9	-1.8	-1.3	-
Kentucky	4.5	4.3	3.7	3.3	3.2	3.2	-0.5	-1.5	-1.1	-0.8
Louisiana	4.8	4.6	3.9	3.4	3.4	3.2	-0.4	-1.6	-1.4	-1.5
Maine	4.7	3.7	2.9	2.7	2.6	2.5	-2.4	-2.4	-0.7	-1.9
Maryland	3.6	2.8	2.1	2.0	2.1	2.0	-2.5	-2.8	-0.5	-
Massachusetts	4.4	3.6	2.6	2.4	2.5	2.4	-2.0	-3.2	-0.8	-
Michigan	4.4	3.7	2.6	2.6	2.5	2.5	-1.7	-3.5	-	-1.0
Minnesota	5.7	4.4	3.4	2.9	2.7	2.7	-2.6	-2.5	-1.6	-1.8
Mississippi	5.3	5.0	4.8	4.4	4.3	4.2	-0.6	-0.4	-0.9	-1.2
Missouri	5.7	4.8	3.6	3.1	3.1	3.1	-1.7	-2.8	-1.5	-
Montana	5.9	5.8	4.7	3.8	3.7	3.6	-0.2	-2.1	-2.1	-1.3
Nebraska	6.0	5.5	4.8	4.0	3.6	3.5	-0.9	-1.4	-1.8	-3.3
Nevada	4.2	2.8	1.9	2.0	2.0	2.0	-4.0	-3.8	0.5	-
New Hampshire	3.9	3.1	2.3	2.2	2.1	2.1	-2.3	-2.9	-0.4	-1.2
New Jersey	4.2	3.7	3.0	2.4	2.4	2.3	-1.3	-2.1	-2.2	-1.1
New Mexico	3.1	2.8	1.9	2.0	1.8	1.8	-1.0	-3.8	0.5	-2.6
New York	4.5	4.1	3.5	3.0	2.9	2.8	-0.9	-1.6	-1.5	-1.7
North Carolina	4.2	3.3	2.9	2.4	2.3	2.2	-2.4	-1.3	-1.9	-2.2
North Dakota	7.4	7.0	6.0	5.1	4.0	4.3	-0.6	-1.5	-1.6	-4.2
Ohio	4.7	4.0	3.0	3.0	2.9	2.9	-1.6	-2.8	-0.8	-0.8
Oklahoma	4.6	4.0	3.2	3.0	3.0	2.9	-1.4	-2.2	-0.6	-
Oregon	3.5	2.8	1.9	1.7	1.7	1.7	-2.2	-3.8	-1.1	-
Pennsylvania	4.8	4.4	3.4	3.2	3.1	3.0	-0.9	-2.5	-0.6	-1.6
Rhode Island	3.8	3.2	2.3	2.3	2.1	2.1	-1.7	-3.2	-	-2.2
South Carolina	3.9	3.3	2.9	2.7	2.7	2.5	-1.7	-1.3	-0.7	-1.9
South Dakota	5.5	6.1	5.7	5.0	4.9	4.8	1.0	-0.7	-1.3	-1.0
Tennessee	5.5	4.8	3.6	3.3	3.1	3.1	-1.4	-2.8	-0.9	-1.6
Texas	4.7	3.5	2.7	2.4	2.3	2.3	-2.9	-2.6	-1.2	-1.1
Utah	3.1	2.6	1.9	1.8	1.8	1.8	-1.7	-3.1	-0.5	-
Vermont	4.4	3.0	2.7	2.1	1.9	1.9	-3.8	-1.0	-2.5	-2.5
Virginia	4.1	3.3	2.4	2.2	2.2	2.2	-2.1	-3.1	-0.9	-
Washington	3.1	2.5	1.9	1.7	1.7	1.7	-2.1	-2.7	-1.1	-
West Virginia	5.5	4.7	4.4	4.0	3.8	3.7	-1.6	-0.7	-0.9	-1.9
Wisconsin	4.9	3.8	2.9	2.4	2.2	2.2	-2.5	-0.7	-1.9	-2.2
Wyoming	3.6	4.8	3.9	3.6	3.3	3.1	2.9	-2.1	-0.8	-3.7

- Quantity zero.

¹ See Appendix II, Average annual rate of change (percent change).

NOTES: Community hospitals are nonfederal short-term general and special hospitals whose facilities and services are available to the public. The types of facilities included in the community hospitals category have changed over time. See Appendix II, Hospital, See Health, United States, 2013, Table 108, for 1970 hospital data.

SOURCE: American Hospital Association (AHA), Annual Survey of Hospitals, Hospital Statistics, 1981, 1991-92, 2002, 2012, 2014, 2015, and 2016 editions, Chicago, IL. (Reprinted from AHA Hospital Statistics by permission, Copyright 1981, 1991-92, 2002, 2012, 2014, 2015, and 2016 by Health Forum, LLC, an American Hospital Association Company.) See Appendix I, American Hospital Association (AHA) Annual Survey of Hospitals.